

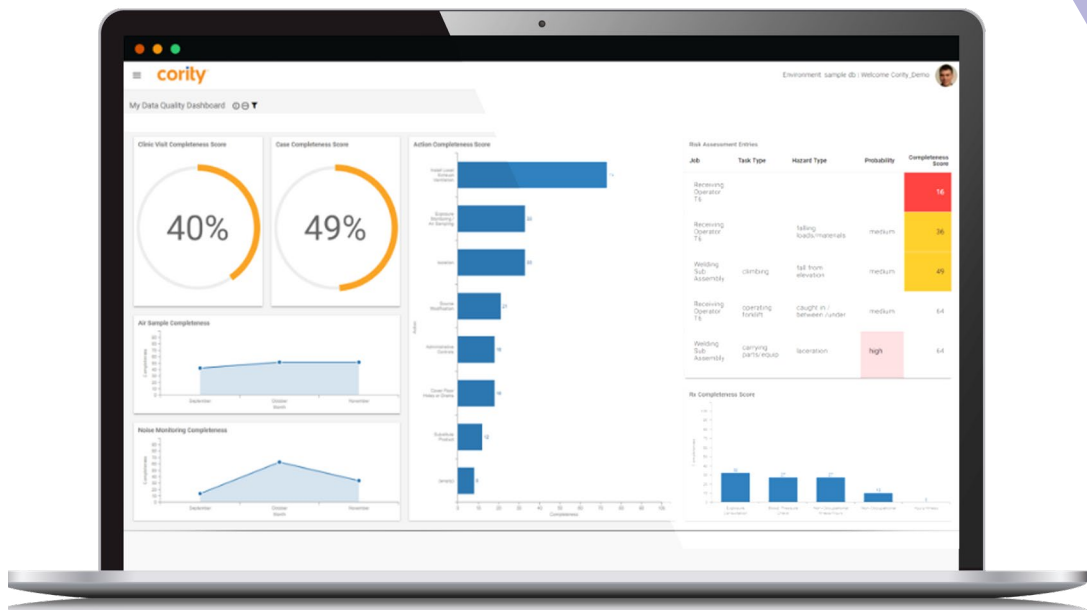


For everyone



Amplivox Cority Integration Module

The first audiometry REST API



Amplivox Cority Integration Module

Working in partnership, Amplivox and Cority are proud to introduce a dedicated solution that provides a seamless and secure integration between Amplivox audiometers and Cority GX2 Electronic Medical Record System.

The Amplivox Cority Integration Module is a direct and secured (FIPS compliant*) interface between Cority software and Amplivox audiometers with no patient data stored on the local PC drive.

This seamless connection supports proven workflow improvements through the reduction of test times and the elimination of paperwork, allowing for a greater level of patient care to be provided.

*Federal Information Processing Standard





First-to-market

Cority Occupational Health (OH) software is used by more than 800 global organizations to pro-actively manage occupational health requirements within the workplace, whilst ensuring regulatory compliance, and better workforce health and wellness.

We are the first occupational health equipment provider to develop an API directly with Cority, providing a secure and seamless audiometric function for hearing conservation programs.

Improved workflow

Operators can benefit from a combination of leading technology with automated processes, meaning duplicate data entry can be eliminated, communication is improved, and data accuracy is optimal.

With results automatically transferred in to the Cority OH database, authorized professionals can gain access to complete medical history, key trending and other insights to drive better business decisions.

Users can easily review patient records on an individual or group defined basis.

Supporting operations

System administrators:

- Secure data connection between audiometer and Cority
- No additional database to secure or maintain
- All data is held securely within Cority

Operators:

- Secured data connection between the audiometer and Cority
- Removes the need for manual data entry
- Removes the need for printing, scanning and uploading of results
- Removes the need to manage and maintain multiple databases

Licences

New license customers

- Complete the license activation form to generate a 14-day license
- Generate Authenticator Token in Cority Administration Portal
- Download and install software
- Enter Cority Portal URL, Cority Authenticator Token and activate
- Within 5 working days you will receive an annual license which can be entered in to the Amplivox Cority API*

*Subject to customer status payment terms.

Enterprise / Volume Licenses

- Download and install software
- System administrator will provide:
 - Cority Portal URL
 - Cority Authenticator Token
 - Amplivox Cority API License key
- Enter Cority Portal URL, Cority Authenticator Token and activate

Software requirements

- Amplivox Cority API works with the Amplivox PC850 and Otosure audiometers manufactured after 2018
- Amplivox Cority API requires Cority Version GX2
- Amplivox Cority API can be installed on any Windows 10 & 11 computer and requires an internet connection

Amplivox Cority

Integration Module solutions

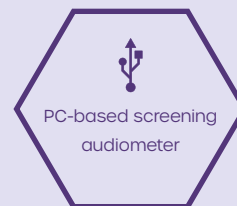
PC850

PC-based automatic screening audiometer

This leading PC-based audiometer is proven to provide a streamlined and efficient hearing conservation programme for mass screening within occupational health and safety critical roles.

Designed to provide both hearing measurement and data management functions, the PC850 can help to reduce test and administration times as well as improve clinic workflows.

- Automatic and manual test modes (inc. Békésy test)
- HSE categorisation
- Unique educational and assessment tools
- Extensive data analysis and trending
- Communication channel
- Third-party EMR integration
- Compact, lightweight and portable



Amplivox manufactured products include a 3-year warranty as standard from date of purchase.

Otosure

PC-based automatic screening audiometer

This PC-based automatic screening audiometer is designed to provide occupational health professionals with fast and accurate hearing tests, as well as significant workflow improvements through time and cost reductions.

- Automatic and manual test modes
- Automatic HSE categorization
- Unique educational and assessment tools
- Extensive data analysis and trending
- Third-party EMR integration
- Compact, lightweight and portable



Audiology booths

For controlled audiological measurements

The 250s and 350s audiology booths allow for accurate, safe and reliable hearing test assessments through the attenuation of background sound.

Designed to assist with compliance of ISO 8253-1 and best practice when completing audiological measurements.

ER-75

Electro-acoustic ear simulator

The ER-75 electro-acoustic simulator is the perfect solution for performing objective validation of audiometers and audiometric equipment, ensuring optimum performance when testing for hearing loss.

At only 1.1lbs, battery powered and with a lightweight and compact design, the ER-75 can be used for both static and mobile requirements.

Contact us to learn more

Amplivox

hello@amplivox.com

Neil Court - UK / International

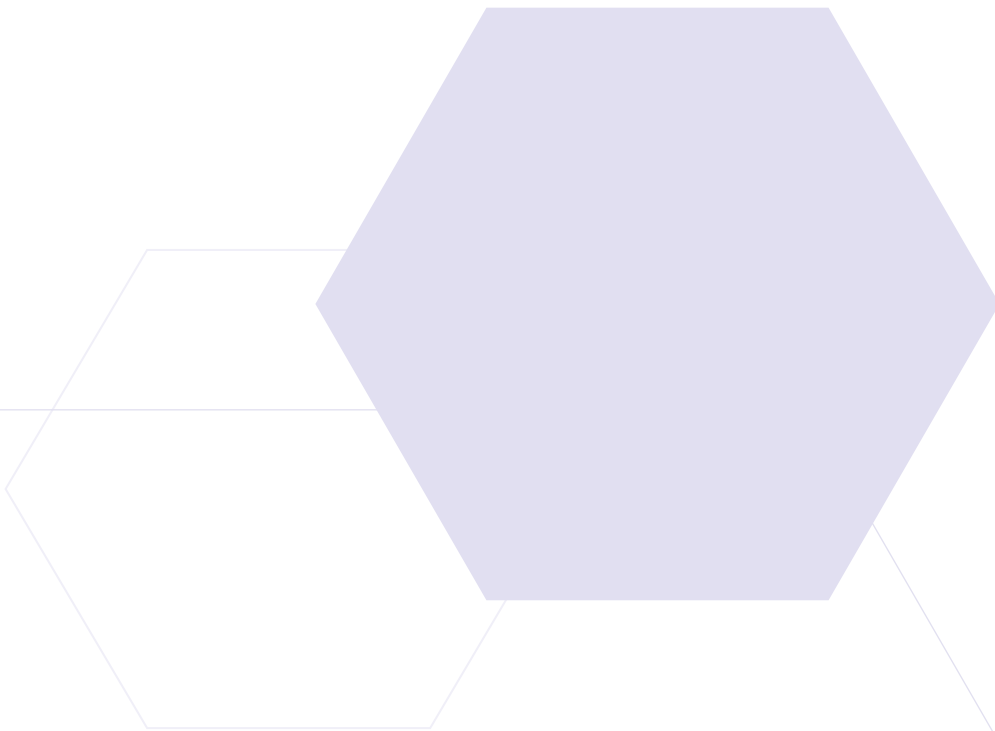
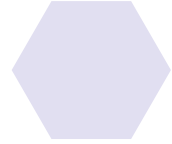
neco@amplivox.com

Suzy Godbout - USA

sysb@amplivox.com

Useful links / information

- Webpage: [Amplivox Cority API](#)
- Webpage: [Audiology booths](#)
- Webpage: [ER-75](#)
- Webpage: [PC850](#)
- Webpage: [Otosure](#)
- Video: [How to use](#)
- Guide: [Activation process](#)



For everyone

Amplivox Ltd, 3800 Parkside, Solihull Parkway, Birmingham Business Park,
Birmingham, West Midlands, B37 7YG, United Kingdom
www.amplivox.com | +44 (0)1865 880846 | hello@amplivox.com

The Amplivox policy is one of continuous development and consequently the equipment may vary in detail from the description and specification in this publication.

EN-ASS26-VI