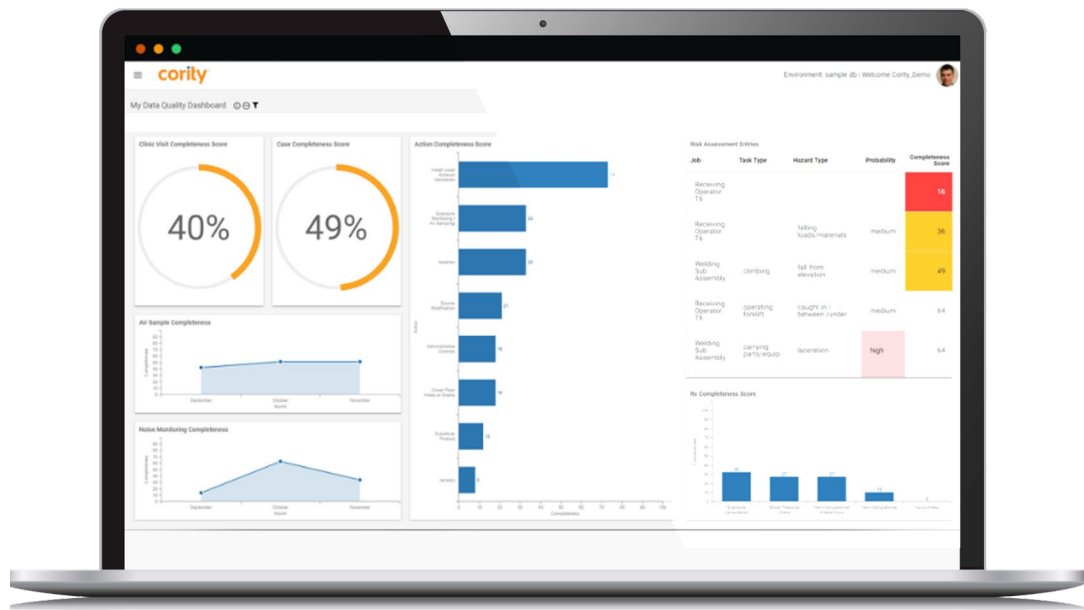




For everyone

# Amplivox Cority Integration Module

The first audiometry REST API



# Amplivox Cority Integration Module

Working in partnership, Amplivox and Cority are proud to introduce a dedicated solution that provides a seamless and secure integration between Amplivox audiometers and Cority GX2 Electronic Medical Record System.

The Amplivox Cority Integration Module is a direct and secured (FIPS compliant\*) interface between Cority software and Amplivox audiometers with no patient data stored on the local PC drive.

This seamless connection supports proven workflow improvements through the reduction of test times and the elimination of paperwork, allowing for a greater level of patient care to be provided.

\*Federal Information Processing Standard



## First-to-market

Cority Occupational Health (OH) software is used by more than 800 global organizations to pro-actively manage occupational health requirements within the workplace, whilst ensuring regulatory compliance, and better workforce health and wellness.

We are the first occupational health equipment provider to develop an API directly with Cority, providing a secure and seamless audiometric function for hearing conservation programs.

## Improved workflow

Operators can benefit from a combination of leading technology with automated processes, meaning duplicate data entry can be eliminated, communication is improved, and data accuracy is optimal.

With results automatically transferred in to the Cority OH database, authorized professionals can gain access to complete medical history, key trending and other insights to drive better business decisions.

Users can easily review patient records on an individual or group defined basis.

## Supporting operations

### System administrators:

- Secure data connection between audiometer and Cority
- No additional database to secure or maintain
- All data is held securely within Cority

### Operators:

- Secured data connection between the audiometer and Cority
- Removes the need for manual data entry
- Removes the need for printing, scanning and uploading of results
- Removes the need to manage and maintain multiple databases

## Licences

### New license customers

- Complete the license activation form to generate a 14-day license
- Generate Authenticator Token in Cority Administration Portal
- Download and install software
- Enter Cority Portal URL, Cority Authenticator Token and activate
- Within 5 working days you will receive an annual license which can be entered in to the Amplivox Cority API\*

\*Subject to customer status payment terms.

### Enterprise / Volume Licenses

- Download and install software
- System administrator will provide:
  - Cority Portal URL
  - Cority Authenticator Token
  - Amplivox Cority API License key
- Enter Cority Portal URL, Cority Authenticator Token and activate

## Software requirements

- Amplivox Cority API works with the Amplivox PC850 and Otosure audiometers manufactured after 2018
- Amplivox Cority API requires Cority Version GX2
- Amplivox Cority API can be installed on any Windows 10 & 11 computer and requires an internet connection

# Amplivox Cority

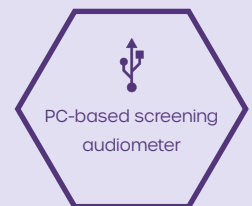
Integration Module solutions

## PC850

PC-based automatic screening audiometer

This leading PC-based audiometer is proven to provide a streamlined and efficient hearing conservation program for mass screening within occupational health and safety critical roles. Designed to provide both hearing measurement and data management functions, the PC850 can help to reduce test and administration times as well as improve clinic workflows.

- Automatic and manual test modes (inc. Békésy test)
- HSE categorization
- Unique educational and assessment tools
- Extensive data analysis and trending
- Communication channel
- Third-party EMR integration
- Compact, lightweight and portable



Amplivox manufactured products include a 3-year warranty as standard from date of purchase.

## Otosure

### PC-based automatic screening audiometer

This PC-based automatic screening audiometer is designed to provide occupational health professionals with fast and accurate hearing tests, as well as significant workflow improvements through time and cost reductions.

- Automatic and manual test modes
- Automatic HSE categorization
- Unique educational and assessment tools
- Extensive data analysis and trending
- Third-party EMR integration
- Compact, lightweight and portable



## Eckel AB 4230

### For controlled audiological measurements

With a considered design, Eckel's pre-assembled AB 4230 audiology booth offers unrivaled acoustic performance.

The AB Series is unique to the market given their size, acoustic integrity, durability and utility.

The AB 4230 allows for accurate, safe and reliable hearing tests in low noise and traffic areas, or where OSHA Standards apply.

## ER-75

### Electro-acoustic ear simulator

The ER-75 electro-acoustic simulator is the perfect solution for performing objective validation of audiometers and audiometric equipment, ensuring optimum performance when testing for hearing loss.

At only 1.1lbs, battery powered and with a lightweight and compact design, the ER-75 can be used for both static and mobile requirements.

### Contact us to learn more

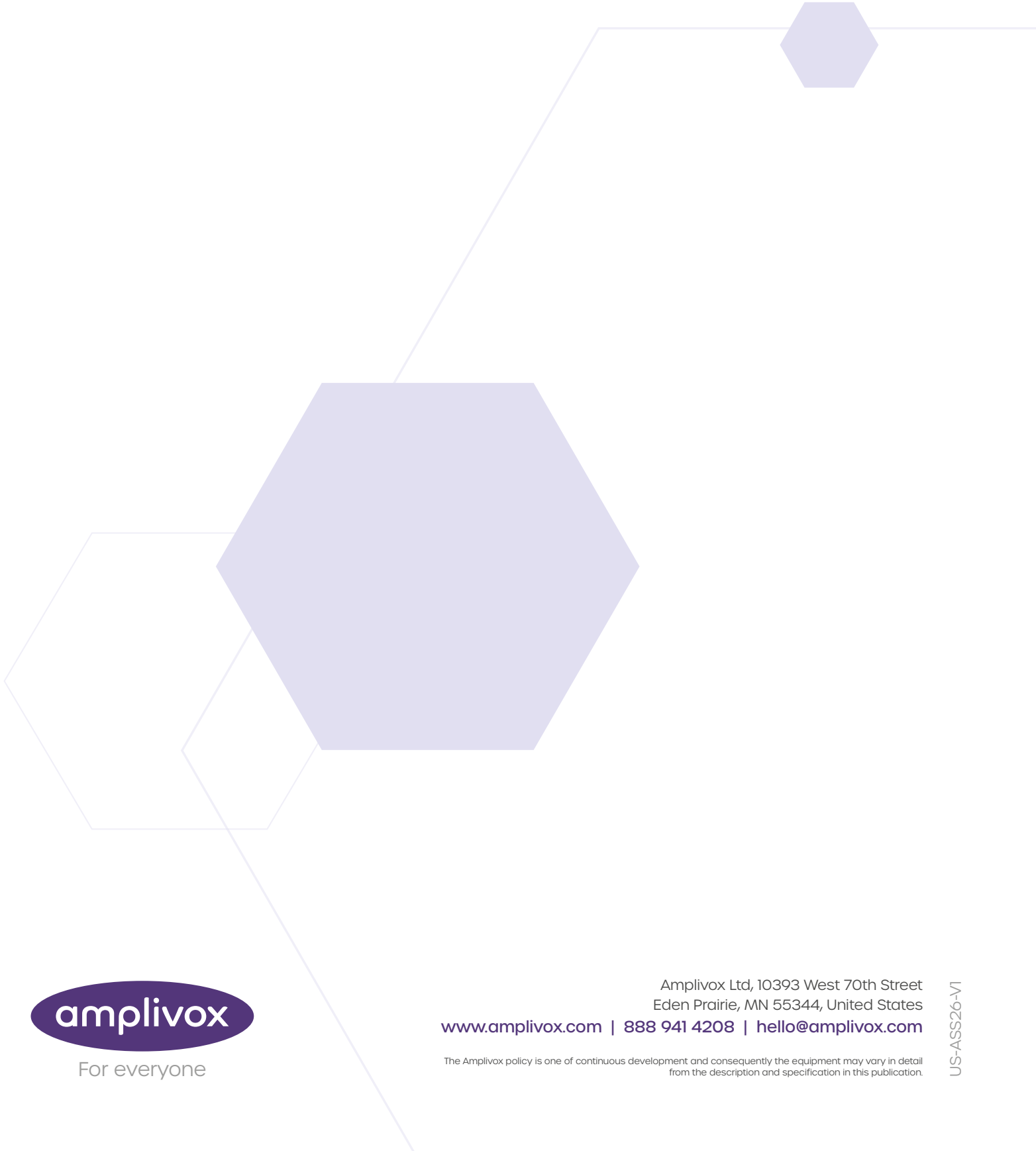
**Amplivox**  
hello@amplivox.com

**Suzy Godbout - USA**  
sysb@amplivox.com

**Neil Court - UK / International**  
neco@amplivox.com

### Useful links / information

- Webpage: [Amplivox Cority API](#)
- Webpage: [Audiology booths](#)
- Webpage: [ER-75](#)
- Webpage: [PC850](#)
- Webpage: [Otosure](#)
- Video: [How to use](#)
- Guide: [Activation process](#)



For everyone

Amplivox Ltd, 10393 West 70th Street  
Eden Prairie, MN 55344, United States  
[www.amplivox.com](http://www.amplivox.com) | 888 941 4208 | [hello@amplivox.com](mailto:hello@amplivox.com)

The Amplivox policy is one of continuous development and consequently the equipment may vary in detail from the description and specification in this publication.

US-ASS26-VI