



PC-based REM / Live Speech Mapping Systems

MedRx AVANT REM Speech+ and REMsp

- HID device . . True Plug and Play REM/LSM module
- Binaural or monaural Live Speech Mapping and Real Ear Measurement System
- 3D-Speech Mapping, Percentile Analysis
- Hearing Loss Simulator for 3rd Party Demonstrations
- 2x20 watt built-in amplifiers
- Compact Design
- USB connection to computer
- Runs with NOAH™ or stand-alone
- Modular (can be used with other Avant products)

Live Speech Mapping

AVANT REM
Speech+
and REMsp

Now, the AVANT™
REM+ is truly plug
and play

No need to load separate drivers during the initial device installation. Simply install the operational software, plug the device into the USB 2.0 port of your computer and you are ready to test. The computer will recognize the REM/LSM module immediately, making the installation process even faster and easier.



The AVANT REMsp is the latest addition to the AVANT family of products – the smallest full REM / Live Speech Mapping System

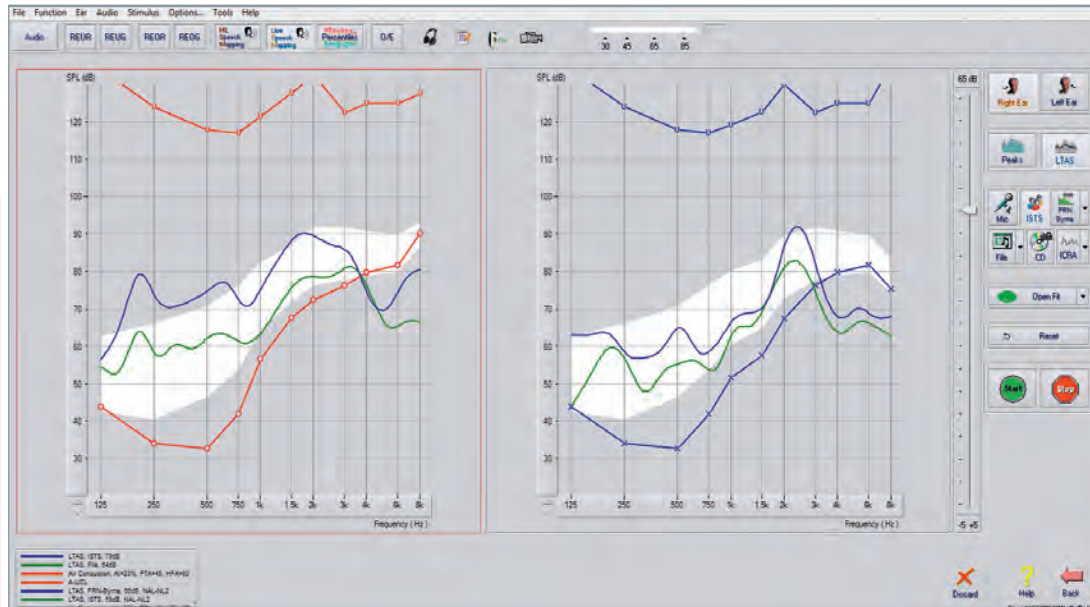
AVANT REM

Real Ear Measurement

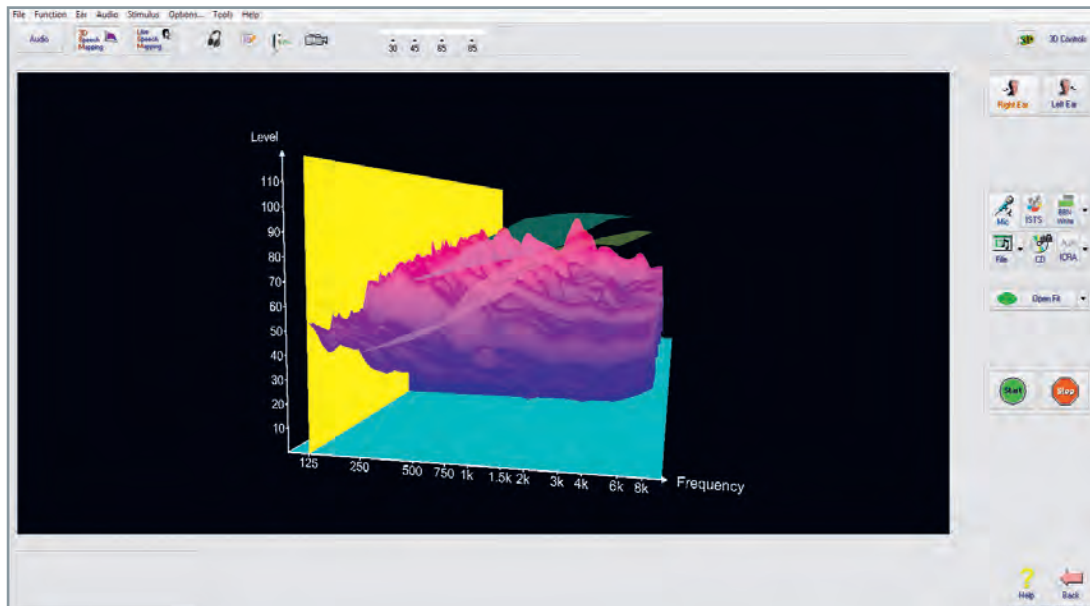
AVANT REM Speech+ and REMsp

Minimum Computer Requirements

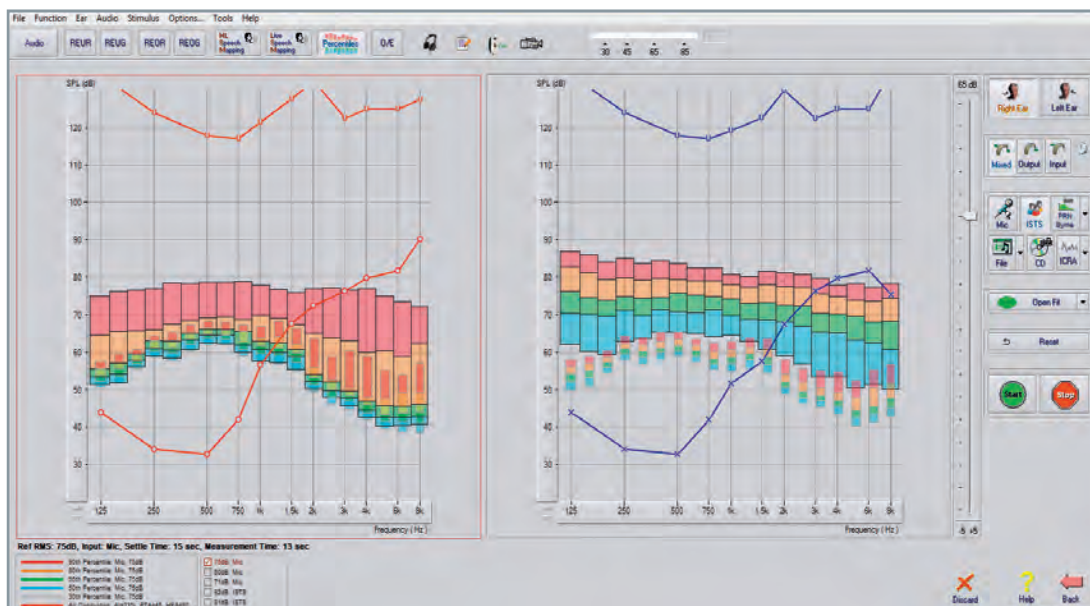
- IBM®-PC compatible computer
- Intel™ Dual Core, 1.8 GHz or better
- 2 GB RAM; 5 GB free hard drive space
- Available 2.0 USB ports (2);
- CD-ROM or DVD-ROM drive
- Windows® 7 or 8 Professional (32 or 64-bit)
- Specifications are subject to change without notice



Live Speech Mapping incl. MSS target (other available targets; DSL v5.0, NAL-NL1 and NAL-NL2)



3D Speech Mapping



Percentile Analysis



AVANT REM Speech+

REM and Live Speech Mapping Software

The AVANT Software Suite can run stand-alone or from NOAH™ System.

It offers an intuitive user interface for data collection, patient monitoring and counseling. In addition to Live Speech Mapping, the Avant REM Software supports all conventional Real Ear Measurements and includes targets for DSL i/o 5.0, NAL-NL1 and NAL-NL2 as well as HLS (Hearing Loss Simulator) and Master Hearing Aid.

Several options are available which allow the user to customize the AVANT REM Software to meet their needs.

■ MedRx AVANT REM Speech+

IN-SITU VERIFICATION

The AVANT REM Speech+ represents a new era of precision in-situ verification for your office. Compact yet rugged, this PC-based system is USB powered and supports all ANSI and IEC Real Ear tests.

STANDARD ACCESSORIES

- Sure-Probe™ microphone system with lighted visual cues and 2 probe microphones,
- 2 headphones and a powered speaker.
- Carrying case; USB cable; probe tubes; plastic box

FEATURES

Features include the Sure-Probe™ microphone system with lighted visual cues and a selectable dual probe measurement option that allows the user to do Live Speech Mapping on both ears simultaneously. The unique MedRx Probe Monitoring system (only on REM Speech+) allows the user to monitor/listen to the Real-time hearing aid output in the Ear canal. (via supplied headset)

PLEASE NOTE: THE ULTIMATE OFFICE+ PACKAGE

Get the AVANT A2D+ Dual Channel Audiometer and the AVANT REM Speech+ Live Speech Mapping System along with a convenient carrying case. Together they make up The Complete Audiological Testing & Fitting System.

■ MedRx AVANT REMsp

THE MONAURAL LIVE SPEECH MAPPING SYSTEM

While the AVANT REMsp is about the size of a typical computer flash drive you have the same testing features as with the REM Speech+ system. The REMsp is a single probe comprehensive REAL EAR Measurement and Live Speech Mapping system.

STANDARD ACCESSORIES

- Sure-Probe™ with adjustable loop
- Powered Speaker
- Carrying case
- USB extension cable
- Probe tubes

Live Speech Mapping

AVANT REM
Speech+
and REMsp



Online live interactive training



Your customers really understand when they see the results



Plug in, to Live speech mapping with the AVANT REMsp

MedRx International
 Sickingenstr. 70-71
 10553 Berlin, Germany
 Tel.: +49 30 / 70 71 46-50
 Fax: +49 30 / 70 71 46-99
 E-mail: medrx-sales@maico.biz
 Web: www.medrx-int.com

Welcome to the New Generation.

Specs

AVANT REM Speech+ and REMsp

About MedRx

MedRx, Inc. is a U.S. based global manufacturer and developer of advanced computerized diagnostic and hearing instrument fitting technologies, specifically designed for the hearing care professional.

MedRx has created a remarkable New Generation of discreet, yet powerful PC-based instrumentation for Audiometry, Real Ear Measurement, Live Speech Mapping, Hearing Instrument Testing & Evaluation and Video Otoscopy.

Technical Specifications

	AVANT REM Speech+	AVANT REMsp
Probe Microphones (L/R)	Dual Electret Microphone elements	Dual Electret Microphone elements
Probe Microphone Tube	Silicone 1.0 mm nominal Diameter	Silicone 1.0 mm nominal Diameter
Measurement Range	40 - 120 ± 3 dB SPL	45 - 110 ± 3 dB SPL
Measured Frequency Range	125 - 8000 Hz	125 - 8000 Hz
Test Stimuli	Broadband Noise and Synthesized Random Noise, - Pink, White, Byrne LTASS, and ANSI weighted; ICRA; ISTS; Microphone, File, CD-ROM for Live Speech Mapping™; Chirp	Broadband Noise and Synthesized Random Noise - Pink, White, Byrne LTASS, and ANSI weighted; ICRA; ISTS Microphone, File, CD-ROM for Live Speech Mapping™; Chirp
Outputs:	Free Field via High Power Internal Amplifiers, 2 x 20 Watts into 4 Ohms	Free Field via 3.5 mm Stereo Jack
Test Stimulus Levels at 1m	45 - 90 dB SPL in 1 dB Steps (depending on speaker wattage & efficiency)	45 - 90 dB SPL in 1 dB Steps (depending on speaker wattage & efficiency)
Test Stimulus Accuracy	± 3 dB SPL	± 3 dB SPL
Equalization	Pressure Method	Pressure Method
Analysis Mode	User Selectable 1/3, 1/6, 1/12, 1/24, 1/48 Octave Bands	User Selectable 1/3, 1/6, 1/12, 1/24, 1/48 Octave Bands
ANSI/IEC Test Available	Real Ear Unaided Response; Real Ear Unaided Gain; Real Ear Insertion Gain; Real Ear Occluded Response; Real Ear Occluded Gain; Real Ear Aided Response; Real Ear Aided Gain	Real Ear Unaided Response; Real Ear Unaided Gain; Real Ear Insertion Gain; Real Ear Occluded Response; Real Ear Occluded Gain; Real Ear Aided Response; Real Ear Aided Gain
Other Test Available	Live Speech Mapping™ with Peaks and LTAS analysis; Real Ear to Coupler Difference Occlusion Effect, Percentile Analysis	Live Speech Mapping™ with Peaks and LTAS analysis; Real Ear to Coupler Difference Occlusion Effect Percentile Analysis
Prescription Methods	MSS (Modified Speech Spectrum); NAL-RP; 1/3 Gain; 1/2 Gain; Berger; Pogo 1; Pogo 2; FIG6; DSL v. 5.0; NAL-NL1; NAL-NL2	MSS (Modified Speech Spectrum); NAL-RP; 1/3 Gain; 1/2 Gain; Berger; Pogo 1; Pogo 2; FIG6; DSL v. 5.0; NAL-NL1; NAL-NL2
External Connections	Powered by USB 2.0 input 5.0 Volt Bus or External Power DC 15 V/2 A, Power Supply 100 V - 240 V, 50/60 Hz; Line-Output jack (Speakers) 3.5 mm Stereo Jack; Probe Microphones inputs (2) 8 pin Mini-DIN; Operator Headset jack 3.5 mm Stereo Jack; Patient Headset jack 3.5 mm Stereo Jack	Power connection USB 2.0 input 5.0 Volt Bus ± 0.2 volts, "A" plug; Line-Output jack (Speakers) 3.5 mm Stereo Jack (0.15 AC volts RMS, min. at 1 kHz); Probe Microphone permanently connected
Dimensions	16 cm x 12.5 cm x 2.5 cm	2.5 cm x 7.6 cm
Net weight	< 250 g	< 250 g



MedRx
Micro PC-Based Instrumentation

AVANT™ is a Trademark of MedRx

Distributed by: