

Instructions for Use
OtoAccess[®]

GDT Interface

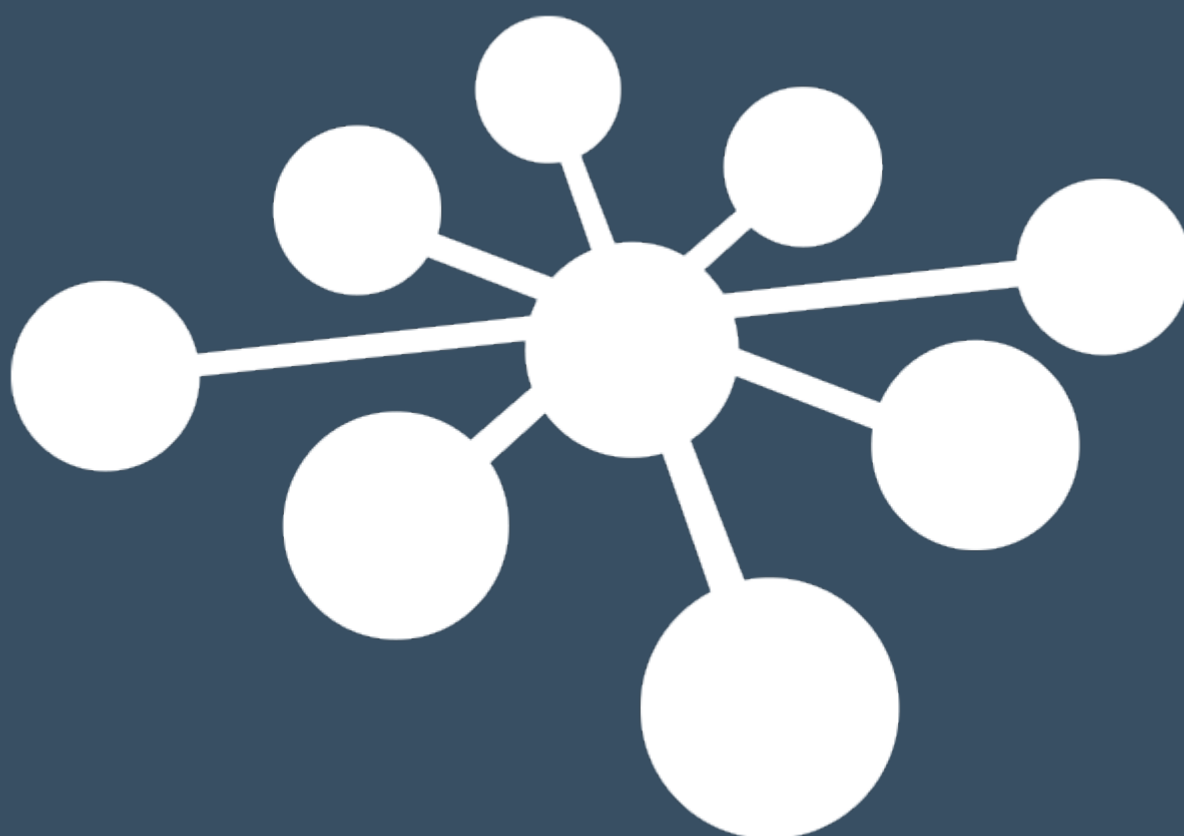


Table of contents

1	Introduction.....	3
1.1	About this manual	3
1.2	GDT interface description	3
1.3	GDT settings	4
1.4	Instruments	5
1.5	Logs	6
1.6	GDT interface application	7
1.7	File exchange timing configuration	7
2	GDT message types	9
2.1	Transferring patient information (6301)	9
2.2	Opening a module (6302)	10
2.3	Reopen a historical session (6311)	11
2.4	Results (6310).....	12
3	GDT support.....	13

1 Introduction

1.1 About this manual

This manual is valid for the OtoAccess® GDT Interface. The product is manufactured by:

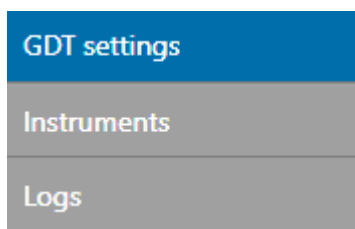
OtoAccess A/S
Audiometer Allé 1
5500 Middelfart
Denmark


This document describes the GDT (Geräte-Daten-Träger) interface implemented for OtoAccess® version 2. GDT version 2.1 standard is followed and implemented protocols are 6301, 6302, 6310 and 6311.

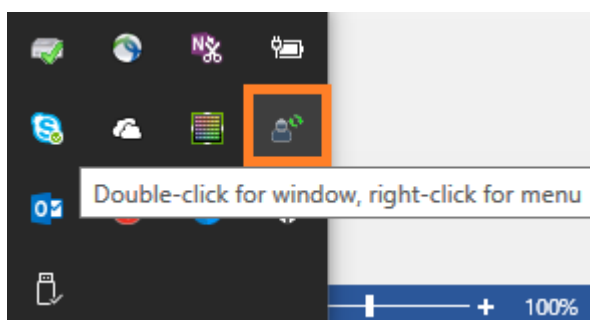
The GDT interface for OtoAccess® is a separate and independent application. If OtoAccess® or any other OtoAccess® supported application is not logged in by a user, starting a GDT application will need a user authentication with OtoAccess® Database. The separate GDT installer is distributed with the OtoAccess® version 2 package.

1.2 GDT interface description

The main screen of the GDT software consists of three categories: GDT settings, Instruments and Logs.





Closing an application will not stop the application from running. The GDT application will be running in the background, and you can access the application with the Quick launch icon. 



By right-clicking on the Quick launch icon, you get three menu options:

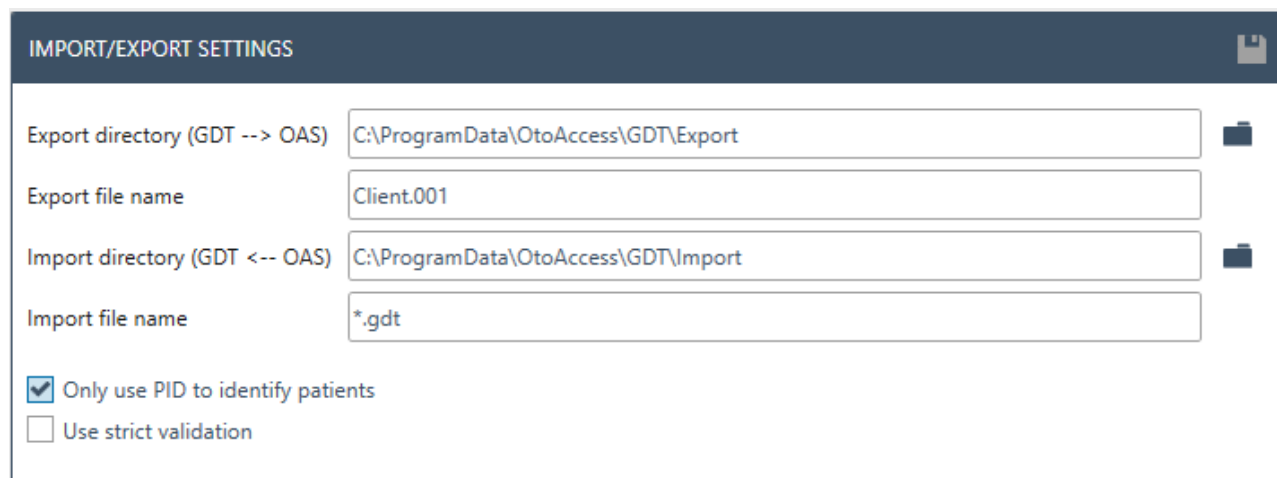
Preferences – click on this option / double click on quick launch icon launches the application.

Stop/Start – Stop or Start the GDT process without closing the application. Quick launch icon state changes according to the actions  /  .

Exit GDT – Exit the application.

1.3 GDT settings

This section provides key settings options for the GDT interface.



IMPORT/EXPORT SETTINGS

Export directory (GDT --> OAS) C:\ProgramData\OtoAccess\GDT\Export

Export file name Client.001


Import directory (GDT <-- OAS) C:\ProgramData\OtoAccess\GDT\Import


Import file name *.gdt

Only use PID to identify patients

Use strict validation


- 1. Export directory (GDT --> OAS):**
Choose an export directory for the GDT interface. Third-party systems look here for files from the GDT interface.
- 2. Export file name:**
Specify the file name with the extension that is expected by the third-party system.
- 3. Import directory (GDT <-- OAS):**
Choose an import directory for the GDT interface. Third-party systems drop the input files here.
- 4. Import file name:**
Specify the file extension which should be processed by the GDT interface. Specific file name can also be used.
- 5. Only use PID to identify patients:**
The default patient identification in OtoAccess® uses a combination of patient id, date of birth, first name, and last name. Tick if the patient should be identified by patient id only.
- 6. Use strict validation:**
Strict GDT file validation will be applied according to the GDT standard specification. Tick if the strict validation should be applied.

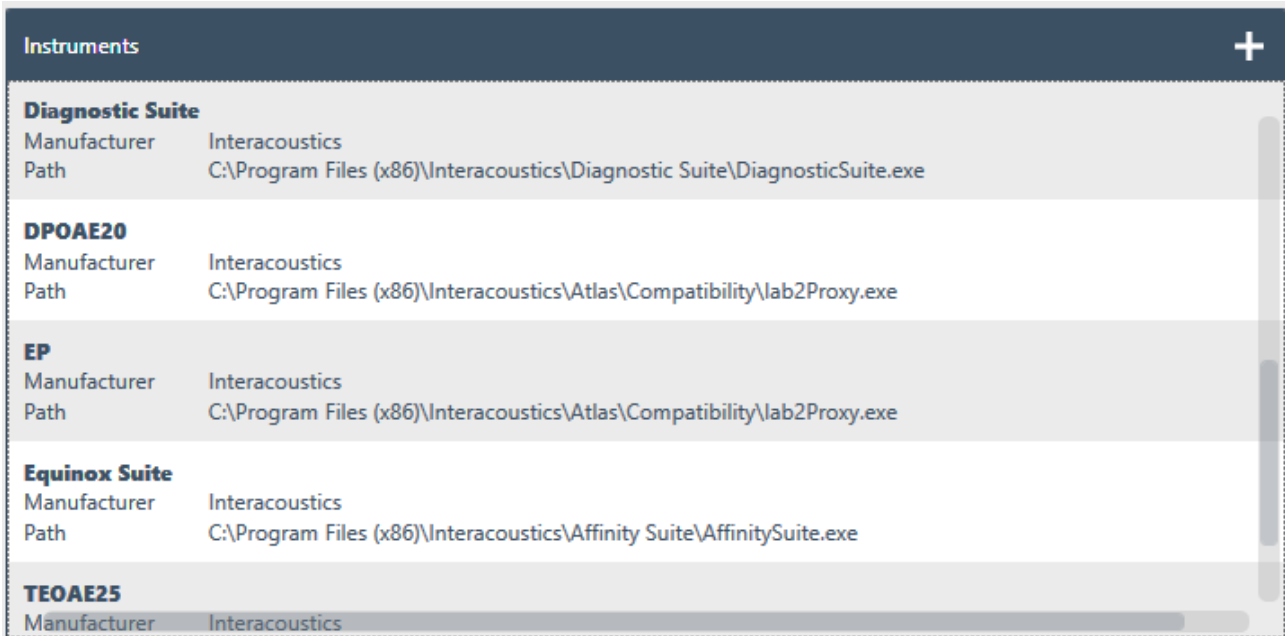
Click on folder icons  to choose the appropriate paths for import / export.

When settings are applied, click the save button icon  to save the settings.

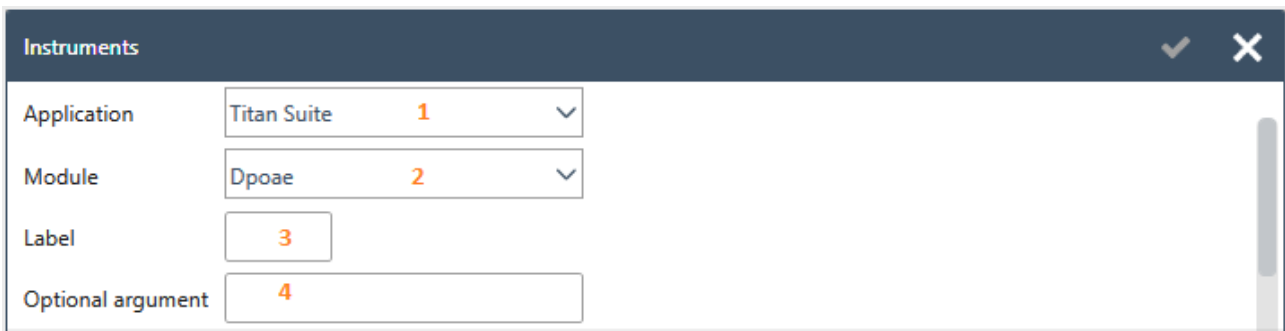
1.4 Instruments

The supported instrument modules are shown here. Scroll in the software to see all modules.

If third-party systems need label mapping to instrument modules, then click the 'add' icon button. 



Clicking the add button will prompt the following control on top of the list. If applicable, provide label mapping to instrument modules and optional arguments, which may be used by the instrument module during start.



1. **Application:**
Use the combo box to choose the application/instrument module.
2. **Module:**
Use the combo box to choose the measurement module which is supported by the application/instrument module.
3. **Label:**
Provide the label for the measurement module chosen.
4. **Optional argument:**
If applicable, provide an optional, command-line argument to be used by the application/instrument module during start.

Click the OK button  to add your data feeds. Continue the same steps if other modules need to be labeled.

An example of label mappings and arguments:

Equinox Suite	
Manufacturer	Interacoustics
Path	C:\Program Files (x86)\Interacoustics\Affinity Suite\AffinitySuite.exe
Titan Suite	
Manufacturer	Interacoustics
Path	C:\Program Files (x86)\Interacoustics\Titan Suite\TitanModuleSuite.exe
Instrument label	ABR
Module name	Abris
Command line argument-	ABRIS
Instrument label	OAE
Module name	Dpoae
Command line argument-	DPOAE

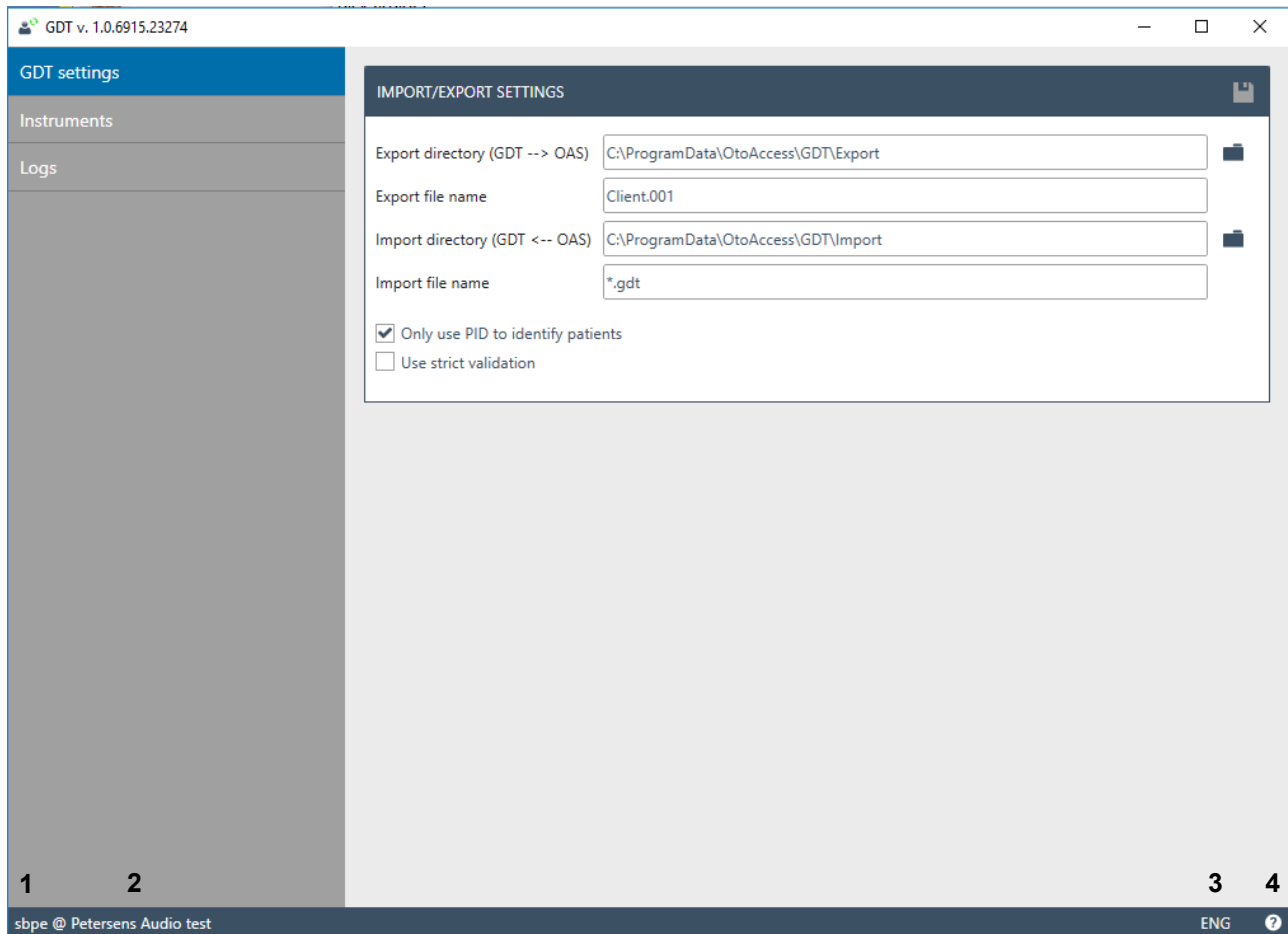
1.5 Logs

Each action related to the GDT interface is logged. Each entry represents an action with a time stamp. Log entries are not saved. Thus, to view and debug any log issues, the GDT interface must be running.

GDT EVENTS
14-12-2018 - 12:56 Selected patient: Andre Klein
14-12-2018 - 12:56 GDT file is invalid
14-12-2018 - 12:56 Updated patient details for: Thomas Winkel
14-12-2018 - 12:56 GDT file is invalid
14-12-2018 - 12:54 GDT file is invalid
14-12-2018 - 12:54 GDT watching path: C:\ProgramData\OtoAccess\GDT\Import for files: *.gdt

1.6 GDT interface application

The screenshot below shows how the application looks upon opening it. There are a few options in the bottom bar, which are numbered and explained below.



1. Shows the logged in user.
2. Shows the facility name registered in the OtoAccess® administration application.
3. Language change option. The preferred language can be chosen here, but the change will affect the language of OtoAccess® and related, supported applications (and vice versa).
4. Help option. Click on the question icon button or press the F1 key to open the GDT interface manual.

1.7 File exchange timing configuration

To ensure stable file exchange between third-party systems and OtoAccess GDT, it is possible to configure timings in the file exchange.

After installation, the file GDT.exe.config is present in the installation folder (default C:\Program Files (x86)\OtoAccess\GDT).

In this file, you can set a pause time for OtoAccess GDT to read the incoming GDT file. In case of unstable file exchange between systems, this may reduce these issues.

The pause time is by default set to 1 second but can be set from 0 to 60 seconds.

Depending on the client computer in use, there will be more processing time added from the input of the GDT file to the removal of the GDT file in the GDT import folder. Expect approx. 2 seconds added to the set time.

```
<applicationSettings>
  <IA.Atlas.GDT.Properties.Settings>
    <setting name="GdtBookmarkPage" serializeAs="String">
      <value>2</value>
    </setting>
    <setting name="TraceSourceName" serializeAs="String">
      <value>OtoAccess GDT</value>
    </setting>
    <setting name="ImportFileRetryTimeout" serializeAs="String">
      <value>00:00:02</value>
    </setting>
    <setting name="ImportFileDelayTime" serializeAs="String">
      <value>00:00:01</value>
    </setting>
  </IA.Atlas.GDT.Properties.Settings>
</applicationSettings>
```

The above screenshot is the applicationSettings part of the GDT.exe.config and the field marked with blue is the setting for import delay in seconds.

To change the value, open GDT.exe.config with Notepad and change the value as needed. It is recommended to add or remove one second before each test. Setting a higher delay will result in longer measurement launch times for the clinician.

For a new configuration to take effect, save and close the file and restart OtoAccess GDT.

Be aware that installing the new update of OtoAccess GDT will erase previous OtoAccess GDT instrument settings.

2 GDT message types

The supported message types are transferring patient information (6301), opening a module (6302), reopen a historical session (6311) and results (6310).

2.1 Transferring patient information (6301)

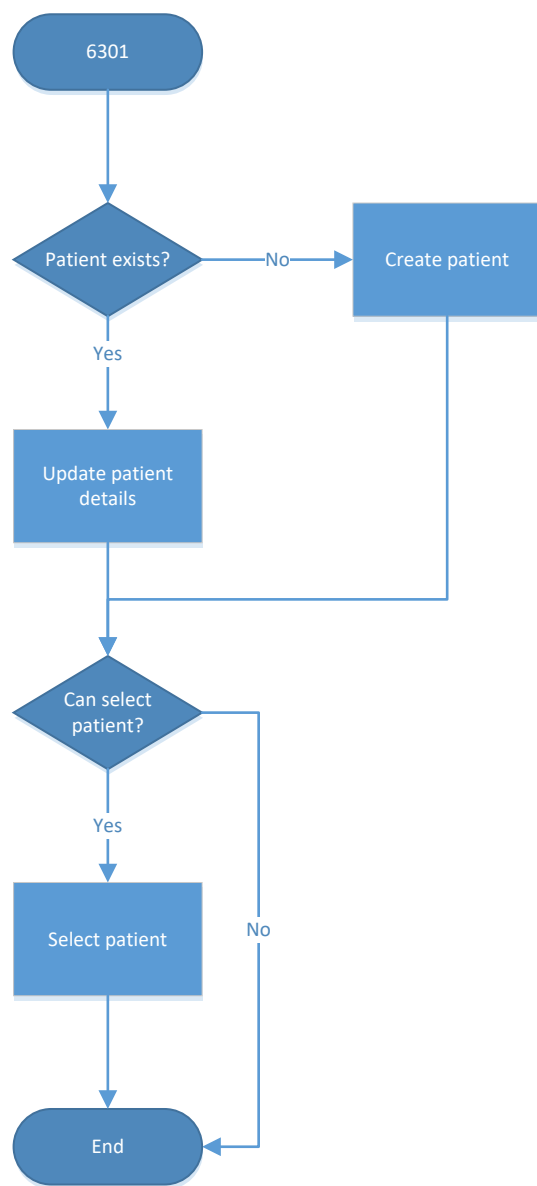
The 6301 file is placed in the import directory. If the patient exists in the database, then OtoAccess® will search for and select that client. If not, the client will be added to the database and will be selected.

Example of 6301 file

```

01380006301
0128100177
011300016
0193101Mustermann
0153102Martin
017310305091900
0123104Dr.
01931051234567890
022310681679 München
0273107Mustermann Str. 34
    
```

6301 file process logic in OtoAccess®



2.2 Opening a module (6302)

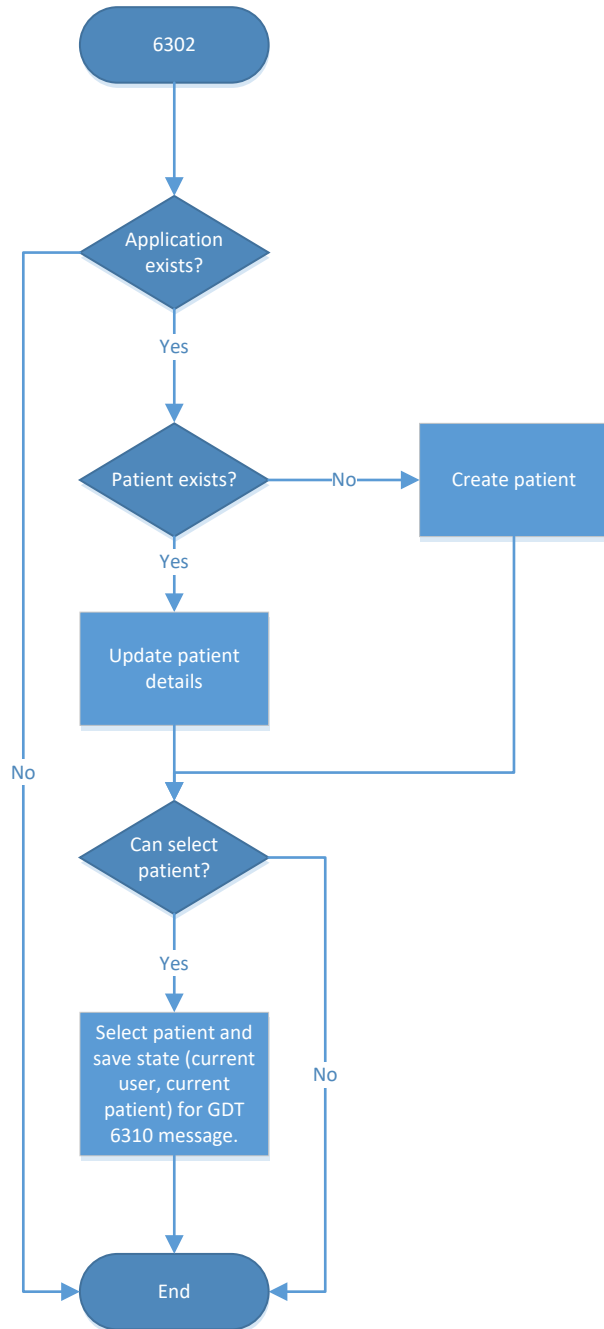
The 6302 file is placed in the import directory. If the instrument specified in the file exists, then the process will continue. If not, the process will end. If the patient exists in the database, then OtoAccess® will search for it and select that patient. If the patient does not exist, then the patient will be added to the database and the patient will be selected. Finally, the instrument module specified in the file will be opened.

Example of 6302 file

```

01380006302
014810000235
01392182.00
011300016
0193101Mustermann
0153102Martin
017310305091900
0123104Dr.
01931051234567890
022310681679 München
0273107Mustermann Str. 34
01031081
01031101
01036220
01036230
0138402BERA
    
```

6302 file process logic in OtoAccess®



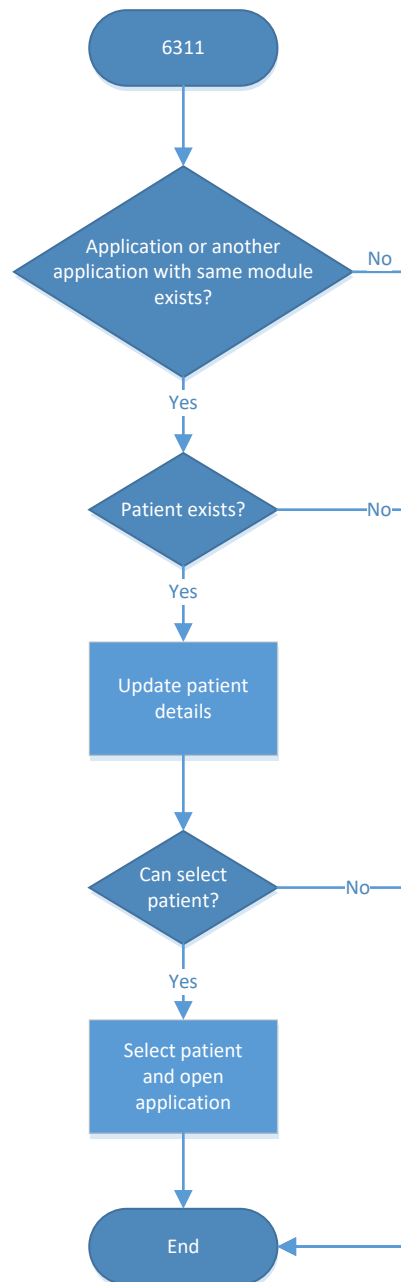
2.3 Reopen a historical session (6311)

The 6311 file is placed in the import directory. If the instrument specified in the file exists, then the process will continue. If not, the process will end. If the patient exists in the database, then OtoAccess® will search for it and select that patient. If the patient does not exist, the process will end. The instrument module specified in the file will be opened and try to load the session specified in the file. If an appropriate session does not exist, nothing will be loaded into instrument module.

Example of 6311 file

```
01380006311
014810000176
01392182.00
011300016
0193101Mustermannadm
0153102Martin
017310305091900
0123104Dr.
0138402BERA
017620024042007
017843224042007
0158439140805
```

6311 file process logic in OtoAccess®



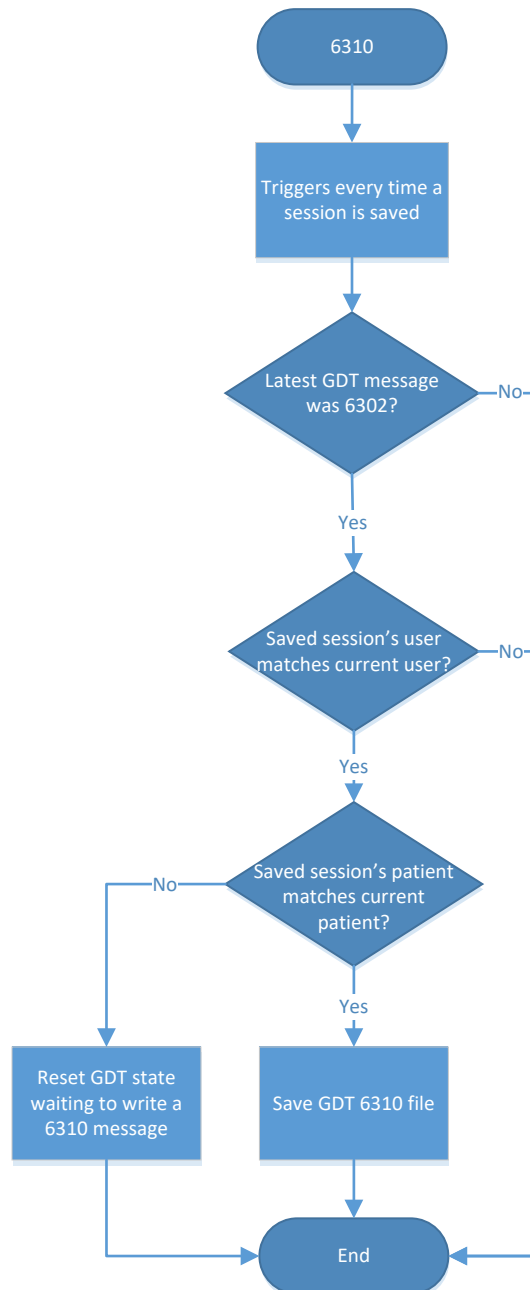
2.4 Results (6310)

The 6310 is placed in the export directory by the GDT interface. If an instrument module is opened by the 6302 message, *continue test* and *save the session* only produce the 6310 output file. The 6310 will contain the session date and time, the module name, and patient identification.

Example of 6310 file

```
01380006310
0128100117
01392182.00
0148402ABRIS
011300014
017843224042007
0158439102521
0146221ABRIS
```

6310 file process logic in OtoAccess®



3 GDT support

Starting an instrument module always passes the GDT message (6302) received by the interface and the optional command-line argument if any set, as described in the section 1.3. This allows instrument modules to process the GDT message and do their own logic depending on needs.